

# Saint Cletus Parish Canticle

Be watchful! Be alert!  
 You do not know when the time will come.  
 — Mark 13:33



## FIRST SUNDAY OF ADVENT

### SPIRITUAL OPPORTUNITIES IN ADVENT

**Daily Mass** 8:00am

#### Sunday Masses

1st, 2nd, 3rd Sundays of Advent – Dec. 3, 10, 17

Saturday Vigil 5:00pm

7:00, 8:00, 9:30, 11:00am, 12:30pm Mass in Spanish

**\*4th Sunday of Advent, Dec. 23** (Please note the changes below)

Saturday Vigil 5:00pm

Dec. 24 7:00, 8:00, 9:30am, 11:00 Mass in Spanish  
 no 12:30pm Mass

**Confessions** 4:15pm Saturdays (Except Dec. 23rd)  
 Parish Reconciliation Service – Dec. 11 at 6:30pm

#### Our Lady of Guadalupe Novena (in Spanish)

Dec. 4, 6, 9, 10 7:00pm in Church

Dec. 5 & 7 7:00pm in Parish Center

Dec. 8 8:00pm Novena after Mass in Church

Dec. 11 8:00pm Novena after Reconciliation in Church

Dec. 12 Feast of Our Lady of Guadalupe  
 5:00am Las Mañanitas in Church  
 7:00pm Mass (in Spanish)

#### Feast of the Immaculate Conception (Holy Day of Obligation)

Dec. 7 7:00pm Vigil Mass

Dec. 8 6:30am, 8:00am, 9:00am, 7:00pm (in Spanish)

#### Parish Reconciliation

Dec. 11 6:30pm in Church

#### Taizé Prayer Service

Dec. 15 7:00pm Silent Reflection, Song, Scripture

#### Christmas Novena (in Spanish)

Dec. 16-20 7:00pm in Church

Dec. 21-23 7:00pm in Rm. 201

#### Holy Hour & Adoration

Dec. 19 6:00-7:00pm

## WELCOME



- 3 Pastor's Notes
- 4 Parish School
- 5 Fundraiser Flier  
Breakfast with Santa Flier
- 6 Social Concerns
- 8 Other Ministry News
- 9 Capital Campaign
- 10 Bending Towards the Light: A Jazz Nativity Christmas Mass Schedule
- 11 Sunday Notes
- 12 Parish Annual Stewardship Report
- 16 Community Bulletin Board
- 17 Week at a Glance
- 18 Parish Information



## Mass Intentions for the Week of December 4 - December 10, 2017

Day	Presider (subject to change)	Time	Intentions
Monday	Fr. Gamboa	8:00 a.m.	Adel Niezgoda, Special Intention - Peter May
Tuesday	Fr. Baker	8:00 a.m.	Walter Johnston
Wednesday	Fr. Clark	8:00 a.m.	John Redling
Thursday	Fr. Baker	8:00 a.m.	Thomas Lihosit
Friday	Fr. Clark	8:00 a.m.	Frank Wojcik, Joseph & Kay Klemak
Saturday	Fr. Gamboa Fr. Clark	8:00 a.m. 5:00 p.m.	Bob Thomas Tony Frasca, Rose Delaloye, Benjamin Patrick Hyink, Linda Heinrich, Dennis Gabriel, Alex Michaels
Sunday	Fr. Gamboa Fr. Baker Fr. Baker Fr. Clark TBD	7:00 a.m. 8:00 a.m. 9:30 a.m. 11:00 a.m. 12:30 p.m.	Grabowski Family, Janet Moss, John & Frances Kennedy, George Duda, Patrick Mahoney Edward Nickiel, Stacy Baker, Buczek Family, Grochowiak Family, Helen Dillon, Frank Dunbar Helen Callaghan, Susan Panico, Eileen Healy Nancy Candella, Gene Kennedy, Mary & Joseph Tortorello St. Cletus Parishioners

### PLEASE PRAY FOR THOSE WHO HAVE DIED AND THEIR FAMILIES...

#### **Modesta "Millie" Billenstein**

Mother of Kristine Collins

#### **Richard Schmitz**

Brother of Joyce Allen

#### **Marion Butler**

#### **Lauren M. Haugh**

Wife of Bob Haugh

#### **Tom Hagen**

Brother of Jim Hagen

**May they rest in peace. Amen.**

### FEAST OF THE IMMACULATE CONCEPTION

Friday, December 8, we celebrate the Immaculate Conception of the Blessed Virgin Mary. This is a Holy Day of Obligation. **Mass Schedule:**

**Thursday, December 7** 7:00 p.m. Vigil

**Friday, December 8** 6:30 a.m. 8:00 a.m.,  
9:00 a.m. (School Mass)  
7:00 p.m. (Spanish Mass)

### BULLETIN ARTICLE SUBMISSION

Please note that all Canticle articles are to be emailed to [canticle@stcletusparish.com](mailto:canticle@stcletusparish.com) as text with pictures attached separately. All articles are due 5p.m. Friday a full week (9 days) before Sunday's publication. Thank you!



## Marriage Banns

**Robert Blase & Carolyn King**

### PLEASE REMEMBER OUR SICK IN YOUR PRAYERS:

*We always welcome names for the sick. Please note that requests must only be made by the individual or an immediate family member. Names will remain in this prayer list for 3 months.*

**November** - Anne Bermier, Chuck Harwood, Denise Hradecky, Peter May, Isabel McKeenan, Eileen R. Peters, Kay Petalick, Larry Schmitz, Chris Tosheff, Jean Weekley

**October** - Jenna Zimmerman, Evelyn Ulfig, Joy Wettstein, Nathaniel Scheyerer, Gerda E. Dorso

**September** - Connie Monzel, Maria Elena Serrano, Ginny Skibbe, Carol Wittowski, Frank Colonna, Jenna Zimmerman, Emily Devine, Catherine Troyner, Frank Colonna, Patricia Rodey, Alice Katzmarek, Baby William Eric Anderson, Otto Stuckman, Laura Terrazino, Gerda E. Dorzo, Maryann Scalise, Kris Kahn, Peter May, Frank Niwa

*Also pray for our parishioners who are in nursing homes or are homebound unable to attend Mass.*

## Notes from Fr. Bob...

### FIRST SUNDAY OF ADVENT

Patrick Kavanagh writes, in a poem entitled Advent, "We have tested and tasted too much, lover. Through a chink too wide there comes in no wonder." His message is that people become tired and surfeited with sensations. For him, Advent is a time of rediscovering wonder: the joy of a bright, crisp wintry morning, smell of food cooking, the look of surprise on the face of a small child exploring a new world, a glimpse of love or thankfulness for a gift. It is a time to pay attention to the particular, to the present moment.

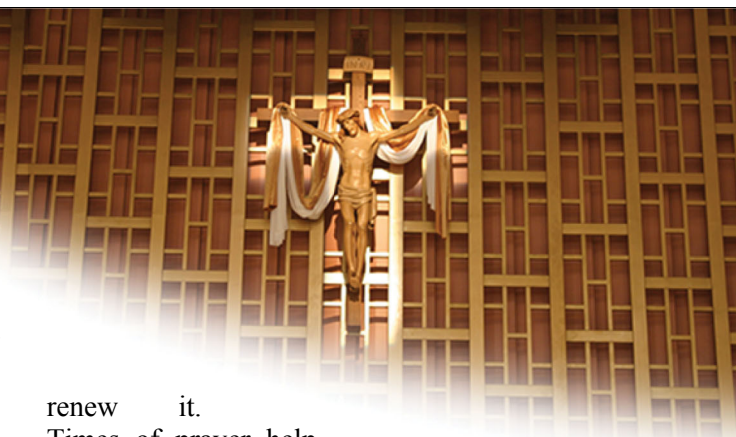
The people to whom Isaiah writes have tested and tasted too much. Their hearts have strayed from God and this has led to a sense of lifelessness which is described in terms of being unclean or wearing filthy clothing. There is no joy to life. They experience the absence of God in their hearts. Yet they know that he is the potter who molds their destiny. Isaiah wants them to see again how God is active in everyday events.

Wakefulness characterizes the life of the disciple. He reflects on how God is active. To be aware of the giftedness of each person requires eyes to see and ears to hear. The disciple is invited to stand alert, like the watchman waiting for dawn, and to recognize God's power and love breaking in.

Paul is aware of this grace as he observes the witness of the Christians in Corinth. He is able to see the giftedness of the members of the community and recognizes the charisms of the Spirit that they possess. His love for Christ gives him the eyes to see and the ears to hear. He has the alertness of the disciple.

This particular Advent is a season of joy as we celebrate over two thousand years of Christianity. That the small group of disciples who fled from the cross is being remembered over two thousand years later is a true miracle. It bears witness to the Spirit poured over the Church at Pentecost. Recognizing the power of Christ in the Church, in good help us approach this season with new eyes and ears. How is God revealed in the cycle of nature? How do other people reveal God's love for me? Moments of tenderness, of intimate love, of forgiveness are causes for celebration.

Silence in the midst of activity is a characteristic of the saints throughout the ages. The example of St. Benedict and his followers for fifteen centuries bears witness to the importance of such silence. How is this to be found in the midst of the busy Christian family? With difficulty, perhaps. But the human heart needs moments of silence to

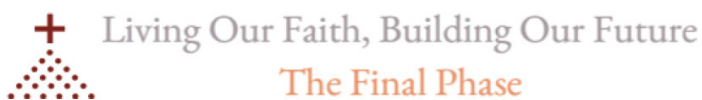


renew it.  
Times of prayer help  
deepen the awareness of God and  
God's work.

Gratitude is the mark of the disciple. May this holy season be a time of growth in gratitude for the faith handed on to each one of us.

### OUR PARISH ADVENT GOAL 2017

Let us all use this holy season of Advent to evangelize someone we know who isn't coming to church regularly. Let it be our goal to personally invite them to attend Mass during this holy season with us. Of course, we will continue to pray for all those who are not attending Church regularly but let us go a step further and reach out to them and personally invite them home. May this Advent journey be filled with all the faithful participating together.



St. Cletus Church is proud to introduce Living Our Faith, Building Our Future: The Final Phase. This final phase will complete our parish center and secure St. Cletus' future.

We are calling all parishioners to give their time, efforts, and talent for this final initiative. Please support our parish community's legacy of stewardship and help us complete our parish center.

*Advent Blessings,*

**Fr. Bob, Pastor**



# Parish School



### DATES TO REMEMBER

Vendor Fair ..... December 2  
 Fundraiser at Five Below ..... December 7-10  
 All School Mass 9am ..... December 8

### FOR INFORMATION OR TO SCHEDULE A TOUR

**Tom Chinske, Principal**      **Christy Schaefer, Asst. Principal**  
 (708) 352-4820      (708) 352-4820  
 tchinske@stcletusparish.com      cschaefer@stcletusparish.com



### Pen Pals

Sixth grade room 118 is sending out letters to their new pen pals in Spain! The students have written letters in English and in Spanish to Miss Smith's prior students in Spain. The students will be continuing this ongoing project in their religion and Spanish class. They will learn about the importance of learning a language and how it unites people. The students will be sharing parts of our culture as well as learning about the culture in Spain.

### Happy Thanksgiving from Preschool!

Preschool enjoyed learning about Thanksgiving last week. Our centers focused on this fun time of year with activities such as watercolor turkey painting, coffee filter turkeys, corn painting, Smartboard and computer letter/number matching. The writing prompt was "I am thankful for..." Some responses were God, teachers, cars, and toys.



### Math Competition

Members of our school's math team represented St. Cletus at Fenwick High School's 37th annual Math Contest. The competition included more than 230 students from 30 schools. Our students did a fantastic job representing our school in the competition which included both team and individual events.

### Fluorescent Flowers

The fifth graders studied the use of green fluorescent proteins and their use in stem cell research. As part of the unit students also learned about Henrietta Lacks whose cancer cells serve as the source for one of the most important cell lines being used in medical research today. Students took two flowers and dipped them into a fluorescent liquid overnight. They dissected each flower and placed them under a black light so they could see how the liquid traveled through the plants' "cells."

# St. Cletus School FUNdRAISER

# **fiVE BELOW®**

sports. media. crafts. party. candy. room. style. now.

THE BEST PLACE TO GET **HOT** STUFF AT **COOL** PRICES AND  
RAISE MONEY FOR OUR ORGANIZATION!

**OUR EVENT WILL BE HELD:**  
**Date:** Thursday, December 7<sup>th</sup> – Sunday, December 10<sup>th</sup>  
**Where:** 30 Countryside Plaza, Countryside, IL. (Home Depot parking lot)

**10%** of the total dollars spent by our organization will be donated back to the **St. Cletus FSA!**  
*Please don't forget to bring this flyer to the event so that we get credit for your purchase!*

To be completed by a Five Below Associate

PRE TAX Purchase Amount \$ \_\_\_\_\_ Transaction #: \_\_\_\_\_  
Register #: 1 2 3 4 5 6 Associate Initials: \_\_\_\_\_

JOIN THE ST. CLETUS  
COUNCIL OF CATHOLIC WOMEN & FSA FOR OUR

*HO HO Holiday*

*Breakfast with*  
**Santa**

**SUNDAY, DECEMBER 10** **8:00 AM - 12:30 PM**

**ST. CLETUS PARISH CENTER**  
**\$3 PER PERSON**



## Social Concerns Ministry

### FOOD PANTRY

#### Most needed at this time:

- Pancake mix/syrup
- Baking mix
- Cooking oil
- Cookies
- Laundry detergent
- Personal Care Items
- \$25 Jewel Gift Cards

#### Thank You

Thank you Pleasantdale Student Council and St. Cletus School for collecting food for our food pantry! The Holy Name Society generously shared 32 turkeys which will be used for some of our Christmas food baskets. So much to be thankful for!

There will be no regular distribution in December because of the Giving Tree and Christmas food baskets. Donations are still needed and will continue to be collected though!

*If you have questions or would like to volunteer with the Social Concerns Ministry contact Kendall Grant (708)215-5418 kgrant@stcletusparish.com*

### GIVING TREE

Don't forget that gifts (purple tags) are due back NEXT WEEKEND! Please remember, each tag represents a real person. When you took a tag from the tree, you made a commitment to that person, and to returning your gift(s) on time.



**\*\*NEW THIS YEAR\*\***

**Gifts will be returned to Morrissey Hall using the convenient drop off lane on Stone Ave.!**

**Volunteers will help unload your car!  
Please DO NOT drop gifts off at the Church**

♥ **PURPLE TAGS** (gifts): Choose the gifts you wish to purchase, keeping in mind that the items listed on the tag are part of a "wish list." You need not purchase every item on the list. **Gifts are to be returned before/after Masses the weekend of December 9-10.**

*Be sure the gift tag is securely attached to the packages. If you have more than one package for the same person, please attach a gift tag on each package indicating his/her name and family number, to make sure all gifts go to the correct person. If you have more than one package for Family Request, please mark 1 of 2, 2 of 2, etc.*

♥ **RED TAGS** (food baskets): Tags include a suggested list for the contents of a Christmas season food basket for the families using our food pantry and others struggling in our community. **Food baskets are needed on Sunday, December 17<sup>th</sup> from 7:30-11:00am in Morrissey Hall.**

We invite you to stop in the narthex next weekend to take a tag or two from one of the Giving Trees. We are thankful for your past generosity in purchasing many gifts for the individual(s) you choose. Thank you!

Your generosity will provide hope and make a difference in someone's life. God bless you on your Advent Journey!

*The Giving Tree Committee*

Answers to frequently asked questions can be found on the parish website: [www.stcletusparish.com/socialconcerns](http://www.stcletusparish.com/socialconcerns). For further details you can also contact Kendall Grant.

### GIVING TREE VOLUNTEER OPPORTUNITIES

Please use the sign up genius link to volunteer for all opportunities: <http://stcletusparish.com/ministries/social-concerns/>

#### **Saturday, December 9<sup>th</sup> shifts between 3:30-6:30pm**

Help direct traffic, carry in donations from donor's cars, sort and organize gifts in Morrissey Hall.

#### **Sunday, December 10<sup>th</sup> shifts between 6:30am-4pm**

Help with hospitality, direct traffic, carry in donations from donor's cars, sort and organize gifts in Morrissey Hall, load gifts to bring to St. Agatha's.

#### **Sunday, December 17<sup>th</sup> shifts between 6:30am-6:30pm**

Help with hospitality, directing traffic, carrying in food basket donations, organizing food baskets, distributing gifts, assisting clients to their vehicles, clean up, etc.



**DOMESTIC VIOLENCE**

**Monthly Domestic Violence Support Group**

**If you or someone close to you is experiencing domestic violence** this group may be very helpful.

The objective of the group is to provide all a chance to talk about domestic violence and share questions, concerns and experiences with others who are facing - or who have faced - similar situations in confidence.

Please contact Kendall Grant at 708.215.5418 or kgrant@stcletusparish.com for more information.

*In an emergency, dial 911, call the National Domestic Violence 24-Hour Hotline at 800-799-7233 or the local 24 hour hotline for Pillars, found in the purple box below.*

**You are not alone.**

**Signs of an Abusive Relationship:**

- Does something, denies it, and then exclaims you are crazy. (Gaslighting)
- Accuses you of doing things you aren't doing/things they are doing. (Projection)
- Does a great job at promising a great future and then delivering a nightmare
- Are chronic liars and are highly manipulative.
- Uses guilt, charm, hope, love, obligation, fear, or confusion to get what they want.
- Often likes to agitate, provoke, argue, or "crazy make" and then pretends to not know why you are so upset.
- Has a "Dr. Jekyll and Mr. Hyde" personality
- Has a staggering lack of empathy and (sincere) remorse for their behavior.
- Yells, name calls, belittles, gives the silent treatment.

Instagram/ThriveAfterAbuse Facebook/ThriveAfterAbuse YouTube/ThriveAfterAbuse

**WORD OF LIFE**

“When we encounter Christ, experience his love, and deepen our relationship with him, we become more aware of our own worth and that of others.”

USCCB Secretariat of Pro-Life Activities  
“How to Build a Culture of Life,” [www.goo.gl/yAt6Gk](http://www.goo.gl/yAt6Gk)



**9 DAYS FOR LIFE**

*Living out Christmas in the New Year How do we live out the message of Christmas in the New Year, rather than pack it away with the ornaments?*

Each year the Octave Day of Christmas falls on the first day of the New Year, on which we also celebrate the Solemnity of the Blessed Virgin Mary, the Mother of God. Her open heart and courageous “yes” to God show us how to live year-round—with hearts open to the Lord, following where He leads. We are called to place our trust in Him, to enter compassionately into the suffering of others, and to love one another as Christ loves us. Like Our Blessed Mother welcomed Jesus, we are called to cherish and protect the gift of human life, at every stage and in every circumstance.

One way to live out the message of Christmas and follow Our Lady’s example is to join 9 Days for Life, a digital pilgrimage of prayer and charitable action from January 18 – 26. Join today at [www.9daysforlife.com](http://www.9daysforlife.com)!

**IMMIGRATION MINISTRY**

On Friday December 15, 2017 join the Immigration Ministry in the 12th Annual Posada Seeking Immigration Reform to walk and pray in solidarity with our immigrant sisters and brothers who—as the Holy Family sought a place to stay—are seeking legislative shelter, “Posada.” Let us show support for DACA families! For more information, please contact Elena Segura, [esegura@archchicago.org](mailto:esegura@archchicago.org), 312.534.533.

**HOMELESS PERSONS MEMORIAL**

Monday, December 19 at 6:30pm  
Old St. Pat’s (700 W Adams St, Chicago 60661)  
On the longest night of the year, please join us as we again remember our homeless brothers and sisters who have died in the last year. The memorial will be held on December 19th at Old St. Patrick's Church. Music again will be provided by Harmony, Hope, and Healing, which puts on this service along with the Ignatian Spirituality Project, Chicago Coalition for the Homeless, Old St. Pat's, New Moms, Cornerstone Community Outreach, and the Night Ministry.

 ARE YOU IN AN UNHEALTHY RELATIONSHIP OR ARE YOU AFRAID IN YOUR OWN HOME?

CALL THE 24-HOUR PHONE FOR HELP:  
**708.485.5254**



DOMESTIC VIOLENCE OUTREACH  
— ARCHDIOCESE of CHICAGO —  
AWARENESS - SERVICES - PREVENTION  
[www.domesticviolenceoutreach.org](http://www.domesticviolenceoutreach.org)

## Other Ministry News

### KOLBE HOUSE JAIL MINISTRY



#### THE DEACON'S WIFE IS COLLECTING STAMPS AGAIN!

Once again I'm collecting stamps for the Kolbe House Catholic Jail Ministry. These are to be used for the Christmas Card mailings from Detainees to their families. As many of you know I serve as a Catholic Minister for the Kolbe House Jail Ministry at Cook County. In an effort to keep the detainees connected to their families, Kolbe House is again asking for postage stamps to be used for the detainees Christmas greetings to their families. This annual effort this year is looking to collect 7,000 first class stamps. If you would like to donate stamps in any denomination (1 cent up to first class postage) please put them in an envelope and drop them off at the rectory marked "**Kolbe House Stamps - c/o Marlene**". Thank You on behalf of the detainees at Cook and Lake county jails and the staff and ministers of Kolbe House.

*-God Bless You all - Marlene*

### BOOK DISCUSSION



The next book discussion will be at 7 P.M. on December 12 in Room 102 of the education building. The book that will be discussed is **The Good Girl** by Mary

Kubica. All are welcome.

### YOUTH MINISTRY GIVING TREE DECEMBER 10, 12:30-2:30PM

Join your friends to work together as part of the St. Cletus Giving Tree! Visit the St. Cletus website to reserve your volunteer spot through Sign-Up Genius. High school teens can work together for a shift and then have time to catch up with each other for a bit afterwards!

Email [bcampbell@stcletusparish.com](mailto:bcampbell@stcletusparish.com) with questions.

### MARY AND MARTHA DONATIONS

We are approaching *Holiday Time* once again. We hope you have been saving little items for the Briar Place residents Christmas packages. We will be putting our gift bags together in the Rectory Basement on December 18, at 9:00 a.m. Small items e.g. lotions, shampoo, combs, tooth brushes, toothpaste, denture cleaner, deodorant, playing cards, small books, and jewelry are needed. We usually assemble 70 bags. Please drop off your donations at the rectory. Thank you for your kindness.

### MISSION LADIES

Our 2017 year is ending with a good feeling of giving out a total of 987 items to 7 local charities. Our thanks & appreciation goes out to all those who donated & worked on different items to meet this total.

We are a small mighty and dedicated Mission Group of ladies. We enjoy socializing each other's Company. We are looking for more young & not so young ladies to join our Mission — no special talent is required to participate. We meet every Wed 9am to 11am. We do not meet during June, July, August and December.

Also work can be done at home.. Come join us. We are still in need of 4 ply & baby yarn. We can also use crosses for the Baby Bibs ... at least 1inch high or smaller.

When leaving any donations in the Ushers room please mark it for "Mission Ladies." For more info call Dolores Scaletta (708-839-9605).

Again THANK YOU ALL. So much.

### SCCCW

#### Ho Ho Holiday Breakfast

*HO HO Holiday Breakfast with Santa* Join us on December 10th as our new parish center is transformed into a holiday wonderland; plan now to join us!

- Continental Breakfast
- Crafts for Children
- Special Appearance by Santa
- Old-Fashioned Cake Walk.

\$3 per person. Response cards are available in the Narthex, online at <http://stcletusparish.com/hoho/> or email [ccw@stcletusparish.com](mailto:ccw@stcletusparish.com) (Please include your family name, number of adults and ages of children attending.)

Reservations requested by December 6th; however, walk-ins will be welcomed!

For more information call Donna at 708-246-5509. Sponsored by the St. Cletus Council of Catholic Women and the St. Cletus School FSA

#### SCCCW's 1st Anniversary Celebration!

Tuesday, January 9<sup>th</sup> GENERAL MEETING 7:00 pm - Mark your calendars and join us as we celebrate friendships made and our many accomplishments! All women ages 18 - 118 are invited!



# We're Almost There...



Living Our Faith, Building Our Future

## The Final Phase

Join us for the final effort to complete our beloved parish center.

Our first phase was successful in completing the shell of the building and purchasing some interior furnishings. However, the space is not yet complete. There are still some furnishings that have not been added to this space. Some of these needs include: audio equipment, tables and chairs, commercial grade concessions equipment, security equipment, and stage lighting.

This center has become the focal point and heartbeat of parish life. Join us in addressing the pressing needs of the present and providing stability for the future. We will be inviting every family to participate in our final phase. We have received almost \$300,000 from early gifts! Thank you for your prayers and support.

## The Final Phase Will Enhance and Secure Our Most Vital Aspects of Parish Life



Youth



Community



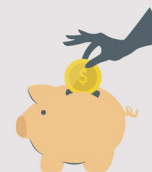
Safety and Innovation

## The Breakdown

Goal: \$1.5 million

- St. Cletus was fortunate enough to receive a modest loan, just under \$1,000,000, in order to cover the remaining construction costs of the parish center and to begin furnishing the space. This campaign seeks to pay back that loan and exist debt-free as a parish!
- The estimated cost of the remaining items that need to be purchased in this final phase is \$500,000. This campaign seeks to make the parish center fully functional, so as to better serve the needs of the community.

All the funds raised that surpass our goal will be allocated towards parish savings, so as to secure our church's future.



*b e n d i n g*  
**T O W A R D S**  
**the Light**  
*a Jazz Nativity*



*Edward*  
 FINE ARTS SERIES  
 AT ST. CLETUS LA GRANGE, IL

DECEMBER 3<sup>RD</sup> 4:00 P.M

ST. CLETUS CHURCH

FREE ADMISSION, DONATIONS ACCEPTED

WWW.EDWARDFAS.COM

We are excited to welcome back to St. Cletus, Bending Towards the Light, a Jazz Nativity. This concert will feature jazz arrangements of traditional Christmas carols along with original compositions tell the story of Mary, Jesus, Joseph, the Angels, the Shepherds, and the three Wise Men in a staged production. Filled with a sense of grace and humor, the cast will include a tap dancing king, a Latin percussion king and a trumpet king, as well as vocal soloists, a vocal jazz quartet, an eight piece jazz band, and the St. Cletus Choir.



## St. Cletus Parish Christmas Mass Schedule

### Fourth Sunday of Advent

**December 23/ 24**

Saturday: 5:00pm

Sunday: 7:00am, 8:00am, 9:30am and 11:00am (Spanish Mass)

*Please note there is no 12:30pm Mass on Dec. 24*

### Christmas Eve

**Sunday, December 24**

2:00pm	Church	Chamber Ensemble
2:15pm	PC-Fr. Clark Hall	Cantor/Piano
3:30pm	Church	Children's Choir
3:45pm	PC-Fr. Clark Hall	Cantor/Piano
5:30pm	Church	Chamber Ensemble
7:00pm	Church (Spanish)	Hispanic Choir
10:30pm	Church	Chancel Choir
(10:00pm to 10:30pm Christmas Carols prior to Mass)		

### Christmas Day

**Monday, December 25**

7:00am Church Organ/Congregational Caroling

8:00am Church Cantor/Piano

9:30am Church Chancel Choir

11:00am Church Contemporary Choir (no 12:30 Mass)

### The Holy Family of Jesus, Mary and Joseph

**December 30/31**

Saturday: 5:00pm

Sunday: 7:00am, 8:00am, 9:30am, 11:00am, 12:30pm (Spanish)

### Feast of Mary, Mother of God/New Year's Day

**Monday January 1, 2018**

8:00am ONLY [NOT A HOLY DAY OF OBLIGATION]



## First Sunday of Advent



### THE JESSE TREE

“A SHOOT SHALL COME OUT FROM THE STUMP OF JESSE, AND A BRANCH SHALL GROW OUT OF HIS ROOTS.” ISAIAH 11:1

This passage from Isaiah is the basis for the Jesse Tree, which has become a symbol of Christ’s heritage, or roots, and God’s covenant with the Jewish people. According to interpretations of this passage, the stump symbolizes the family of the Jews; the shoot, Mary; and the branch, Jesus. In the Old Testament, Jesse was a poor farmer from Bethlehem who had 8 sons, the youngest of whom was David. As a boy, David was anointed by Samuel to succeed Saul as the King of the Israelites. Christ, the Savior was to be born of the house of David in Bethlehem. Today, the Jesse Tree is used to trace God’s promise of a Savior and Christ’s ancestry, and thereby allows us to share in the active waiting and hoping for the promised Savior.

In our sanctuary, we will adorn our Jesse Tree, with illustrated ornaments that represent the people, prophecies, and events leading up to the birth of Jesus. They tell the story of God in the Old Testament, connecting the Advent season with the faithfulness of God across four thousand years of history.

#### The first week:

Adam and Eve – Genesis 3:1-24;  
 Noah – Genesis 6,7,8:1-19,9:8-17,  
 Abraham – Genesis 12:1-3,18:1-5; Genesis 22: 1-8;  
 Jacob – Genesis 28:10-22;  
 Joseph’s Coat – Genesis 37:3-4,12-28;  
 Moses – Exodus 2:23-24;3:4:1-20; 16:1-36.

#### Visit these sites for more Advent reflections and activities:

[www.loyolapress.com](http://www.loyolapress.com)  
[www.dynamiccatholic.com](http://www.dynamiccatholic.com) – Best Advent Ever

### TODAY’S READINGS

**First Reading** — We are the clay and you, O LORD, are the potter: we are the work of your hands (Isaiah 63:16b-17, 19b; 64:2-7).

**Psalm** — Lord, make us turn to you; let us see your face and we shall be saved (Psalm 80).

**Second Reading** — God is faithful; by God you were called to fellowship with the Son (1 Corinthians 1:3-9).

**Gospel** — Be watchful! Be alert! You do not know when the time will come. (Mark 13:33-37).

The English translation of the Psalm Responses from *Lectionary for Mass* © 1969, 1981, 1997, International Commission on English in the Liturgy Corporation. All rights reserved.

### READINGS FOR THE WEEK

Monday: Is 2:1-5; Ps 122:1-9; Mt 8:5-11  
 Tuesday: Is 11:1-10; Ps 72:1-2, 7-8, 12-13, 17; Lk 10:21-24  
 Wednesday: Is 25:6-10a; Ps 23:1-6; Mt 15:29-37  
 Thursday: Is 26:1-6; Ps 118:1, 8-9, 19-21, 25-27a; Mt 7:21, 24-27  
 Friday: Gn 3:9-15, 20; Ps 98:1-4; Eph 1:3-6, 11-12; Lk 1:26-38  
 Saturday: Is 30:19-21, 23-26; Ps 147:1-6; Mt 9:35 — 10:1, 5a, 6-8  
 Sunday: Is 40:1-5, 9-11; Ps 85:9-14; 2Pt 3:8-14; Mk 1:1-8

### SAINTS AND SPECIAL OBSERVANCES

Monday: St. John Damascene  
 Wednesday: St. Nicholas  
 Thursday: St. Ambrose; Pearl Harbor Remembrance  
 Friday: Immaculate Conception of the Blessed Virgin Mary  
 Saturday: St. Juan Diego Cuauhtlatatzin

### GOD HAS A DIFFERENT PLAN

We begin the season of Advent with a heartfelt call for our own repentance. We remember God’s faithful love for us, and call upon God to help us to turn back. For “behold, you are angry, and we are sinful” (Isaiah 64:4). In the first reading and in the psalm, we recall God’s promises and lament our unfaithfulness and our guilt. We call upon God’s might and power in order to save us. With Isaiah, we ask God to “rend the heavens and come down, / with the mountains quaking before you” (Isaiah 63:19). Yes, God is faithful to us, because we are the work of God’s hands. God is the potter, we are the clay. And yet, our concept of how God will come to save us is rooted in our own expectations of a warrior God who crushes mountains and thunders into our lives with great noise and glory. But God has a different plan: the Incarnation.

Copyright © J. S. Paluch Co., Inc.





# Stewardship of Treasure

## St. Cletus Parish Balance Sheets June 30, 2017 and 2016

	<u>2017</u>	<u>2016</u>
<b>Assets</b>		
Parish Checking/Payroll Accounts	\$ 440,545	\$ 227,688
Parish Savings Accounts	54,778	49,248
School Building Fund Savings Account (3)	66,627	242,946
Auxiliary Group Bank Accounts	175,658	166,846
Prepaid Deposit/Prepaid Expenses	8,984	39,913
Restricted School Endowment investments (1) (2) (3)	408,638	670,890
Unrestricted Parish investments at market value (4) (5)	417,621	541,920
Parish investments Pledged to Building Campaign Fund (6)	-	500,000
Restricted Building Campaign Fund Accounts (1) (7)	<u>46,882</u>	<u>2,123,708</u>
<b>TOTAL ASSETS</b>	<b><u>\$ 1,619,732</u></b>	<b><u>\$ 4,563,158</u></b>
<b>LIABILITIES AND NET ASSETS</b>		
<b>Liabilities</b>		
Accounts payable and Accrued Expenses	\$ 203,568	\$ 229,842
Tuition deposits	102,059	71,926
Parish Center Capital Loan Payable (8)	<u>704,474</u>	<u>-</u>
<b>Total Liabilities</b>	<b><u>\$ 1,010,101</u></b>	<b><u>\$ 301,769</u></b>
<b>Total Net Assets</b>	<b><u>\$609,631</u></b>	<b><u>\$4,261,389</u></b>
<b>TOTAL LIABILITIES AND NET ASSETS</b>	<b><u>\$ 1,619,732</u></b>	<b><u>\$ 4,563,158</u></b>

(1) - Restricted funds are not available for general parish operations.

(2) - 2017 change in balance from 2016 column includes \$ 52,748 gain in endowment investment.

(3) - 2017 change in balance from 2016 column includes distributions of (\$315,000) for the Parish Center Construction.

(4) - 2017 change in balance from 2016 column includes \$56,264 gain in parish investments.

(5) - 2017 change in balance from 2016 column includes distributions of (\$180,563) for the Parish Center Construction

(6) - 2017 the Parish pledged and withdrew (\$500,000) from parish investments for the Parish Center Construction.

(7) - 2017 change in balance from 2016 column includes deposits \$398,118 and distributions of (\$2,474,944) for the Parish Center Construction.

(8) - As of June 30, 2017 the loan for the Parish Center Construction (\$704,474)

**St. Cletus Parish**  
**Statement of Revenue and Expense**  
**Twelve Months Ended June 30, 2017 and 2016**

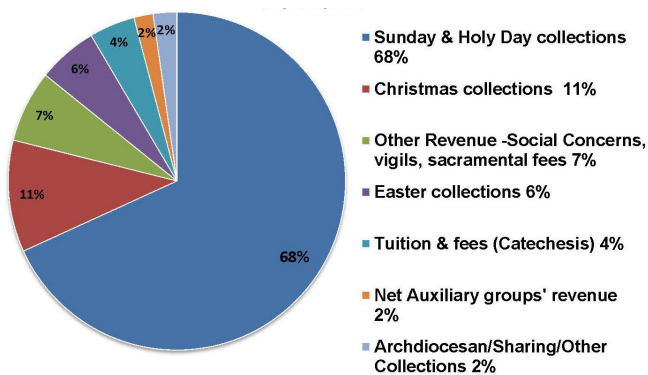
	<u>2017</u>	<u>2016</u>
<b><u>Church Revenue</u></b>		
Sunday & Holy Day collections	\$ 1,302,721	\$ 1,357,893
Christmas collections	204,360	211,603
Easter collections	109,445	102,549
Tuition & fees (Catechesis and youth)	83,784	85,992
Estate/Bequest/Memorial Donations	-	-
Net Auxiliary groups' revenue (expense)	35,111	50,574
Archdiocesan/Sharing/Other Collections	43,352	37,382
Other Revenue - i.e. Social Concerns, vigils, sacramental	<u>131,531</u>	<u>131,284</u>
<b>Total Church Revenue</b>	<u>1,910,304</u>	<u>1,977,277</u>
<b><u>Church Expenses</u></b>		
Salaries & benefits	943,875	901,371
Books/supplies/liturgical	90,100	97,809
Administrative/office/professional services/technology	96,240	77,670
Utilities	52,482	49,540
Building Maintenance repairs & supplies	87,047	94,655
Used Truck Purchase	20,383	-
Archdiocesan assessments/insurance	283,658	284,178
Archdiocesan/Sharing/Other Collections	40,192	37,382
Other Expenses- i.e. hospitality, donations ,formation, social concerns	<u>168,854</u>	<u>210,090</u>
<b>Total Church Expenses</b>	<u>1,782,831</u>	<u>1,752,695</u>
<b>Church Net Surplus</b>	<u>\$ 127,473</u>	<u>\$ 224,582</u>
<b><u>School Revenue</u></b>		
Tuition & fees	\$ 2,246,731	\$ 2,168,151
Fundraising events, Annual Fund, Fall Fest, Spring Auction, etc.	<u>175,775</u>	<u>212,860</u>
<b>Total School Revenue</b>	<u>2,422,506</u>	<u>2,381,011</u>
<b><u>School Expenses</u></b>		
Salaries & benefits	1,993,334	2,041,667
Books / instructional / technology / admin	181,633	201,223
Maintenance & repairs	135,240	133,012
Utilities	83,355	72,520
Insurance / assessment	69,450	70,372
Other Expenses- i.e. fees, meetings, marketing	<u>55,426</u>	<u>48,429</u>
<b>Total School Expense</b>	<u>2,518,438</u>	<u>2,567,223</u>
<b>Parish Support to School</b>	<u>(95,932)</u>	<u>(186,212)</u>
<b>PARISH OPERATING SURPLUS</b>	<u>\$ 31,541</u>	<u>\$ 38,370</u>
<b><u>Other Revenue and Other Expenses</u></b>		
Building Fund Campaign Revenue Collections and interest earned	398,118	535,005
Building Fund Expense (Contractor, architect, furnishings and equipment)	(4,189,601)	(279,909)
School Building Capital Improvements	(29,973)	(91,035)
Interest Income	1,927	2,577
Unrealized gains from school endowment investment	52,748	(30,806)
Unrealized gains from parish investment	<u>56,264</u>	<u>(12,543)</u>
<b>NET PARISH INCOME</b>	<u>\$ (3,678,976)</u>	<u>\$ 161,659</u>



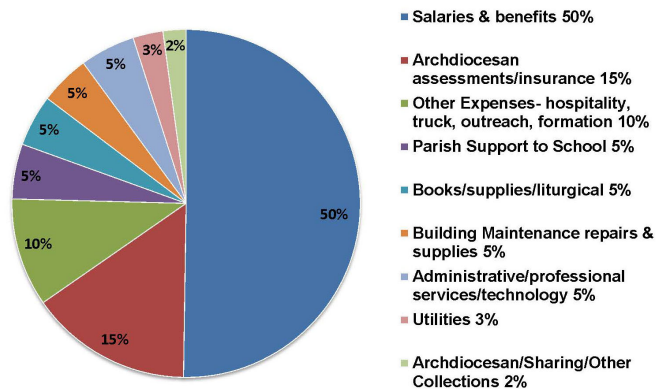
# Stewardship of Treasure

## Sources and Uses of Parish Operating Funds

Sources of Parish Operating Funds Fiscal Year 2017  
\$1,910,304

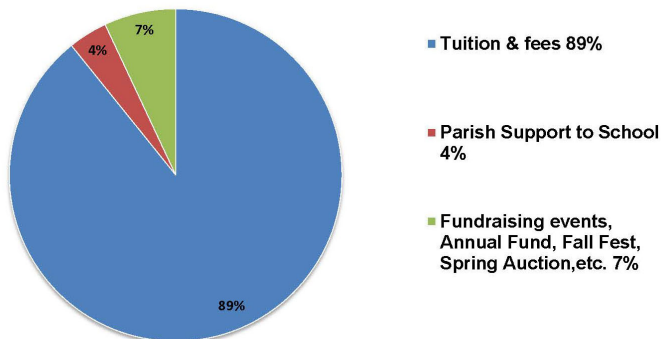


Uses of Parish Operating Funds Fiscal Year 2017  
\$1,878,763

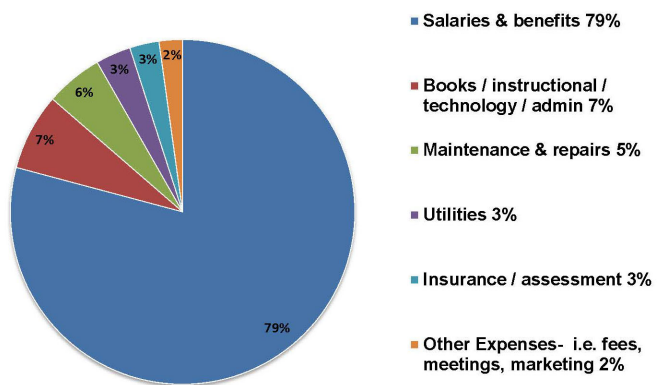


## Sources and Uses of School Operating Funds

Sources of School Operating Funds Fiscal Year 2017  
\$2,518,438



Uses of School Operating Funds Fiscal Year 2017  
\$2,518,438







# Stewardship of Treasure

## Summary of the Parish Financial Report

As you look around the beautiful St. Cletus campus with our new Parish Center facilities it can be said that we are truly blessed. Sharing these blessing of time, talent and treasure ensures the continued vitality of our parish. Thank you for your extraordinary effort and continued commitment to finishing this project in the next fiscal year.

- The parish finished the June 30, 2017 fiscal year with an operating income (the shaded line of the Statement of Revenue and Expense) of \$31,541.
- The parish's combined Sunday, Christmas and Easter collections for the year ended June 30, 2017 decreased by a total of \$55,519 from the prior year ended June 30, 2016.
- Combined parish and school salaries and benefits decreased \$5,829 in 2017.
- Ordinary maintenance and repairs for the church, school and rectory decreased by \$5,380 in 2017.
- Parish and school family participation contributed toward \$175,775 of school fundraising revenue in 2017.
- The Fall Fest/Carnival was a huge success netting a profit of over \$100,500, allocated approximately \$30,000 for the school, \$20,500 for the parish and the \$50,000 for the Parish Center Campaign.
- The required parish support to the school in 2017 was \$95,932 a decrease from 2016 of \$90,280 due to increased enrollment and reduced expenses.
- Building Campaign Fund (Parish Center) revenue received during 2017 was \$398,118. The Parish Center building construction began in July 2016 incurring expenses of \$4,189,601 of which \$704,474 have been paid through a 5 year, 4% fixed loan from the Archdiocesan Bank. Because building fund activity is not part of the parish's normal operations, it is not considered in determining the parish's operating income, but rather considered Other Revenue.
- During the year ended June 30, 2017, the parish's investment accounts had net unrealized gain of \$56,264. The school's investment account had a net unrealized gain of \$52,748. Because investment gains and losses are not part of the parish's/school's normal operations, they are not considered in determining the parish's/school's operating income but rather considered Other Revenue.

### Parish Census Data

Registered Families: 2,755

Baptisms: 106

Marriages: 25

Funerals: 68

School Enrollment: 432 Pre-K- 8<sup>th</sup> Grade

Religious Education: 424 Pre-K- 8<sup>th</sup> Grade, Special Needs

First Communion: 128

Confirmation: 95

Thank you for your support of St. Cletus Parish.

Fr. Bob Clark  
Pastor

Fr. Ken Baker  
Associate Pastor

Fr. Lorenzo Gamoba  
Associate Pastor

Marie Usher, St. Cletus Parish Finance Committee, Chairperson

Please use this email [finance@stcletusparish.com](mailto:finance@stcletusparish.com) or call the rectory 708-352-6209 with any questions.

## Community Bulletin Board

### TOWNSHIP OF LYONS

SAVE THE DATE! Township of Lyons 6404 Joliet Rd Countryside Board of Trustees & AARP present Defensive Driving for 50 & Over Tuesday, December 5 and Wednesday, December 6 2017 from 10:00 a.m. - 2:00 p.m. Cost: AARP member \$15, non-member \$20. Class Completion earns auto insurance discount! Class size limited to 35. Sign up with Mary Jo Noonan, Clerk 708-482-8300 x 221

### ST. RITA HIGH SCHOOL

**December Novena to St. Rita of Cascia - Healing Mass**  
St. Rita of Cascia Novena Mass on Thursday, Dec. 7th at 7p.m. This will also be a Healing Mass and a blessing will take place with Blessed St. Rita Oil. The Sacrament of Reconciliation is offered starting at 6p.m.

**"A Christmas Carol"** - The St. Rita High School Theater is excited to announce their winter production of "A Christmas Carol," a play based on the classic novel by Charles Dickens. Performances will be Friday, Dec. 8th & Saturday, Dec. 9th at 7:00p.m. and Sunday, Dec. 10th at 2:00p.m. in the St. Rita High School Auditorium. Tickets are \$4 for children and \$8 for adults and can be purchased at the door.

For more information please call (773) 925-6600 or visit [www.stritahs.com](http://www.stritahs.com). St. Rita of Cascia High School 7740 S. Western Ave. Chicago, IL 60620.

### ROSARY HILL HOME

The conflicts of the early Christians in Corinth are in many ways similar to our struggles today as Christians. They, too, witnessed division, scandal, immorality, persecution and other trials. In response, St. Paul taught the Corinthians about the Church as the Body of Christ, introducing them to the most powerful gift of all: the Eucharist. You are invited to join Rosary Hill Home for this study!

Rosary Hill Home will be hosting First Corinthians: The Church and the Christian Community Bible study in Activity Room beginning Monday, January 8, 2018 at 7:00 p.m. and

continuing every Monday, except January 29th, for 10 weeks. Last session Monday March 19, 2018. Cost of study pack includes group meetings and on-line additional lesson viewing options is \$30.00.

For more information or to register for the study, call Sharon at (708) 458-3040 or via email: [sharon@rosaryhill.com](mailto:sharon@rosaryhill.com). Please register by December 4, 2017!

Rosary Hill is located at 9000 W. 81st Street Justice, IL 60458.

### PASSION PLAY TRIP TO GERMANY



13 DAYS, 11 CITIES & 3 COUNTRIES Skyline Travel is proud to offer an exclusive travel experience culminating in an once-in-a-decade excursion to Oberammergau's Passion play in Germany! RESERVE YOUR SEAT TODAY! \$200 per person non-refundable deposit. Only 45 spots available. Estimated Air-Inclusive Package \$6,350.00 per person based on double occupancy. Call Skyline Travel at 630-963-2277 for details.

### BELLARMINE JESUIT RETREAT

"The Beatitudes: A Faith for Head, Heart, & Hands" an Ignatian, Silent Retreat for Women. February 2-4, 2018 with Carol Ackels. 420 W County Line Rd • Barrington, IL 60010 • 847-381-1261 • [www.JesuitRetreat.org](http://www.JesuitRetreat.org)

### ST. RENE GOUPIL

Super Bingo/Raffle and Christmas Basket Raffle on Sunday, December 10. Doors open at 12:30pm. Admission \$20 in Advance, \$25 at the Door. More info 773.229.8523.

### ABBEY FARMS CHRISTMAS TREES

Open Nov. 18-Dec. 23 daily 10am-7pm. Field Trees \$45 each, Premium Field Trees \$60. Visit us at 2855 Hart Road, Aurora, IL. More info at [www.abbeyfarms.org](http://www.abbeyfarms.org).

## Preferred Providers

**R.W.S.**  
**Landscaping & Lawncare**  
708-489-6333

**J. WILSON PRINTING, INC.**  
John Wilson  
Western Springs, IL  
(708) 246-5604



**MAZUR**  
MAZUR-GON CONSTRUCTION

**newman architecture**

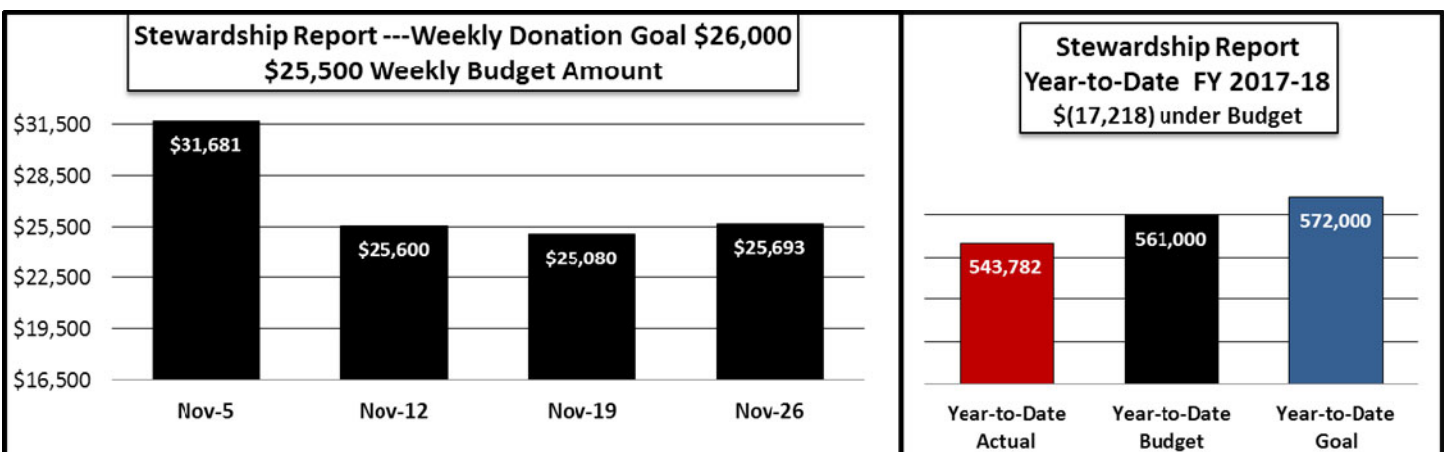
**Jeffrey R. Tobolski**  
Cook County Board  
Commissioner 16th District

*Thank you to all of our 2017 Fall Fest Sponsors! Those at the \$2,500 and above will be featured in the Canticle as Preferred Providers.*

## Week at a Glance

DAY/DATE	TIME	LOCATION	EVENT
Sunday, December 3	7:00am 4:00pm 7:00pm	Narthex Church Church	Welcome Committee Bending Towards the Light: A Jazz Nativity Our Lady of Guadalupe Novena
Monday, December 4	4:00pm 7:00pm 8:30pm 9:00pm	School Music Room Church Parish Center Gym Morrissey Hall	Junior Choir Our Lady of Guadalupe Novena Men's Basketball Boy's Church League Basketball
Tuesday, December 5	6:30pm 6:30pm 7:00pm 7:00pm 9:00pm	Church Rectory Basement Parish Center Rm 1 Rectory Parish Center Gym	RCIA School Board Our Lady of Guadalupe Novena Social Concerns Commission Meeting Boys Church League
Wednesday, December 6	7:00pm 9:00pm	Church Parish Center Gym	Our Lady of Guadalupe Novena Boys Church League
Thursday, December 7	4:00pm 7:30pm 7:00pm 7:00pm 7:00pm 9:00pm	School Music Room School Music Room School Rm 213 Church Parish Center Rm 1 Parish Center Gym	Children's Choir Chancel Choir FSA Board Meeting Immaculate Conception Vigil Mass Our Lady of Guadalupe Novena Boys Church League
Friday, December 8	6:30 & 8:00am 9:00am 7:00pm 8:00pm	Church Church Church Church	Immaculate Conception Mass Immaculate Conception School Mass Immaculate Conception Spanish Mass Our Lady of Guadalupe Novena
Saturday, December 9	7:00am 7:00pm	Morrissey Hall Church	Giving Tree Gifts Return (Purple Tags) Our Lady of Guadalupe Novena
Sunday, December 10	8:00am 11:00am 7:00pm	Parish Center Church Church	Ho Ho Holiday Breakfast with Santa Family Mass Our Lady of Guadalupe Novena


## Stewardship Report





# St. Cletus Parish Information

## CONTACT US

Rectory .....(708) 352-6209  
 Español .....(708) 215-5440  
 School .....(708) 352-4820  
 www.stcletusparish.com  stcletuschurch

## RECTORY OFFICE HOURS

Monday thru Saturday ..... 9:00 a.m. - 5:00 p.m.  
 Sunday ..... 8:00 a.m. - 12:30 p.m.

## MASSES

Saturday Evening ..... 5:00 p.m.  
 Sunday ..... 7:00 a.m., 8:00 a.m., 9:30 a.m.,  
 11:00 a.m., 12:30 p.m. (Spanish)  
 Weekdays ..... Mon. thru Sat. 8:00 a.m.  
 Evening before Holy Day ..... 7:00 p.m.  
 Holy Day ..... 6:30 a.m., 8:00 a.m.

## CONFESSIONS

Confessions every Saturday ..... 4:15 - 4:45 p.m.

## BAPTISMS

1st & 3rd Saturday of the month at 11:00 a.m.  
 Parents must be registered parishioners and attend the Baptism Preparation class. Please make arrangements by calling the Rectory office.

## WEDDINGS

Dates and times are reserved for registered parishioners. Initial arrangements must be completed five months in advance of the wedding date. Contact Bobbie Kallal (708) 352-6209.

## HOME/HOSPITAL VISITATION AND COMMUNION CALLS

Please contact the Ministry of Care Office ..... (708) 215-5407

## PARISH MISSION AND VISION STATEMENTS

**Mission Statement:** St. Cletus is a dynamic Catholic community dedicated to spreading the Good news of Jesus Christ through worship, education, and service.

**Vision Statement:** We welcome all. We encourage all parishioners to live the Gospel message of Jesus Christ in their daily lives, by sharing their talents and faith with our parish and community.

## STAFF

### PARISH STAFF

Rev. Robert Clark, *Pastor*  
 Rev. Kenneth Baker, *Associate Pastor*  
 Rev. Lorenzo Gamboa, *Associate Pastor*  
 Rev. Mr. Stuart & Marlene Heyes, *Deacon Couple*

### PASTORAL STAFF

Fr. Ken Baker/Paulette Bolton, *Worship*.. (708) 215-5422  
 Karen Ziemba, *Music Ministry* ..... (708) 215-5423  
 Elizabeth Tomasek, *Youth Ministry*..... (708) 215-5419  
 Kendall Grant, *Social Concerns*..... (708) 215-5418  
 Deacon Stuart Heyes, *Pastoral Care* ..... (708) 215-5407  
 Debbie Lestarczyk, *Business Manager*..... (708) 215-5405  
 Christopher Wagner, *Technology* ..... (708) 215-5420

### HISPANIC MINISTRY STAFF

..... (708) 215-5440  
 Rev. Lorenzo Gamboa, *Head of Hispanic Ministry*

### SCHOOL STAFF

..... (708) 352-4820  
 Tom Chinske, *Principal*  
 Christy Schaefer, *Assistant Principal*  
 Mary Lee Krieger, *Administrative Assistant*  
 Jeannie Scalzitti, *Receptionist/Office Assistant*

### RELIGIOUS EDUCATION STAFF

..... (708) 352-2383  
 Barb Campbell, *Director of Religious Education*  
 Deborah Pusinelli, *Assistant*  
 Paulette Bolton, *Director of Adult Faith Formation*  
 and *Assistant Director of Worship*

### RECTORY STAFF

..... (708) 352-6209  
 Bobbie Kallal, *Human Resources/Records*  
 Mary Zwolinski, *Parish Accounting*  
 Elizabeth Goellner-McLean, *Bulletin Editor*  
 Carol Scatena, *Weekend Assistant*

## ST. CLETUS SCHOOL BOARD

Pastor ..... Fr. Bob Clark  
 Chairperson ..... Eileen Dorchinecz  
 Vice Chairperson ..... John Rossmiller  
 Secretary ..... Valerie Sosne

### Members

Scott Aulinkis ..... Colleen Mhley  
 Bob Havelka ..... Patrick O'Toole  
 Kevin Hogan ..... Ron Skrip  
 Chris McLean ..... Patrick Townsend  
 Nicholas McKeehan

### Liaisons

FSA President ..... Guadalupe McKeehan  
 Athletic Association President ..... Brendan Foley

## PARISH PASTORAL COUNCIL

Pastor ..... Fr. Bob Clark  
 Chairperson ..... Jack Fisherkeller  
 Vice-Chairperson ..... Chuck Luna  
 Recording Secretary ..... Maggie Kensek  
 School Representative ..... Tom Chinske  
 Director of Parish Catechesis ..... Paulette Bolton  
 Staff Representative ..... Debbie Lestarczyk

### Members

Mary Ann Doornbos ..... Colleen Hagen  
 Susan Hurley ..... Helen McMahan  
 Robbie O'Shea ..... Henry Morlock

CHURCH NAME AND ADDRESS

St. Cletus Church #9238  
600 W. 55th Street  
La Grange, IL 60525

TELEPHONE

708-352-6209

CONTACT PERSON

Elizabeth Goellner/  
Debbie Lestarczyk (Bus Mgr)

SOFTWARE

MSPublisher 2003  
Adobe Acrobat 7.0  
Windows XP Professional

PRINTER

HP Laserjet 1022

SUNDAY DATE OF PUBLICATION

December 3, 2017

NUMBER OF PAGES SENT

1 through 15

Wednesday 3pm

SPECIAL INSTRUCTIONS